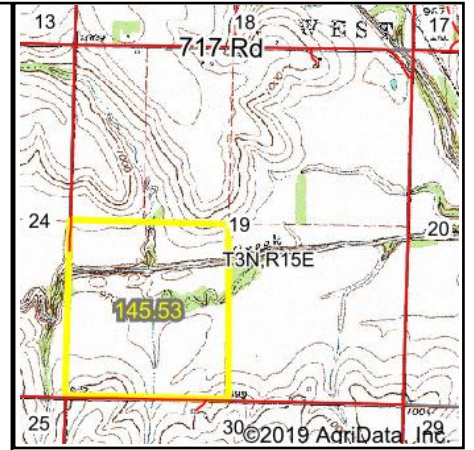
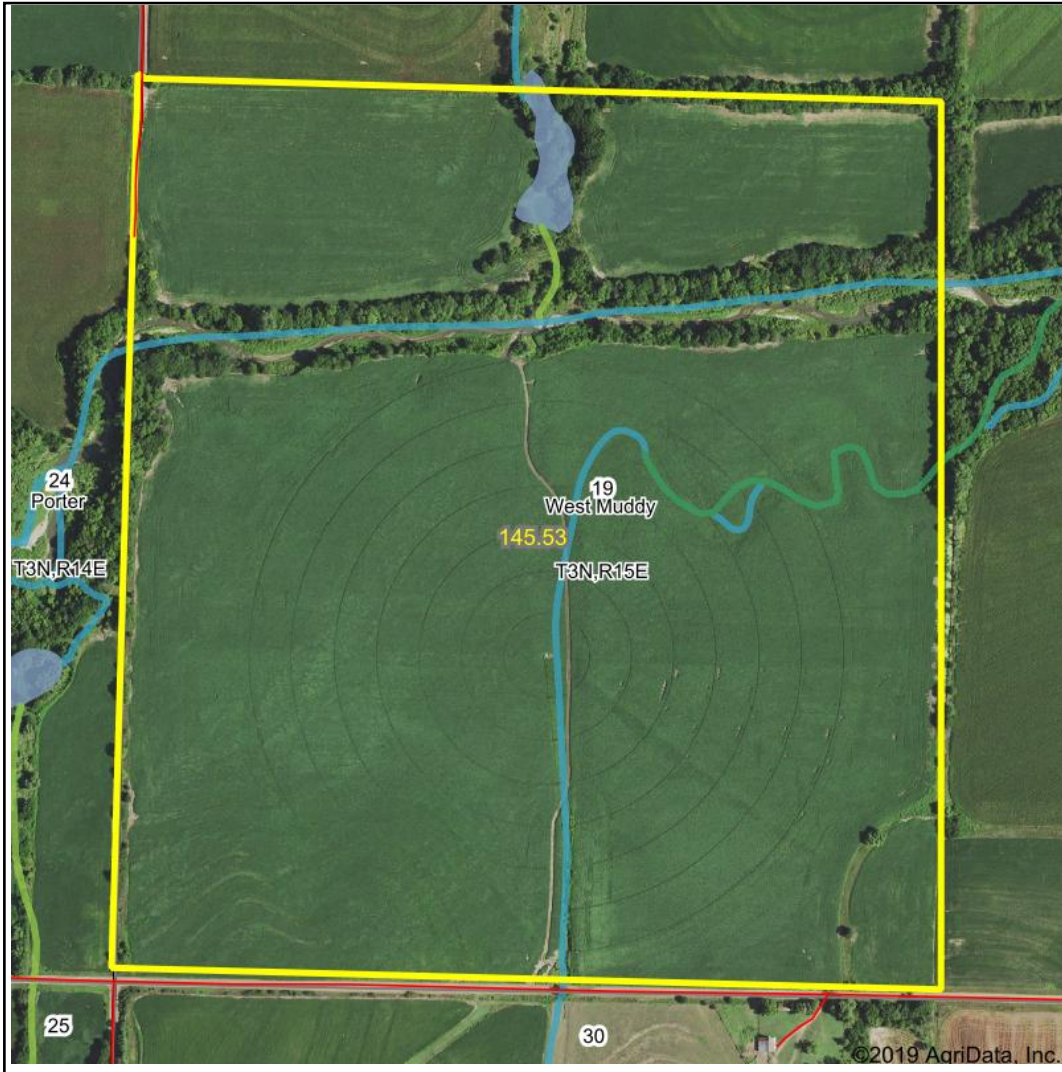
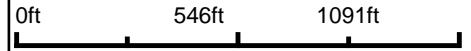
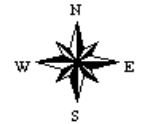


# Wetlands Map



**State:** Nebraska  
**Location:** 19-3N-15E  
**County:** Richardson  
**Township:** West Muddy  
**Date:** 4/3/2019

Maps Provided By:



Classification Code	Type	Acres
R4SBCx	Riverine	1.08
PUBFh	Freshwater Pond	1.02
R4SBC	Riverine	0.94
PFOA	Freshwater Forested/Shrub Wetland	0.59
PEM1C	Freshwater Emergent Wetland	0.14
Total Acres		3.77

Data Source: National Wetlands Inventory website. U.S. DoI, Fish and Wildlife Service, Washington, D.C. <http://www.fws.gov/wetlands/>