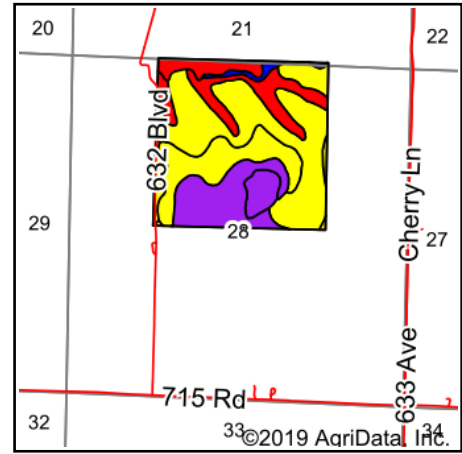
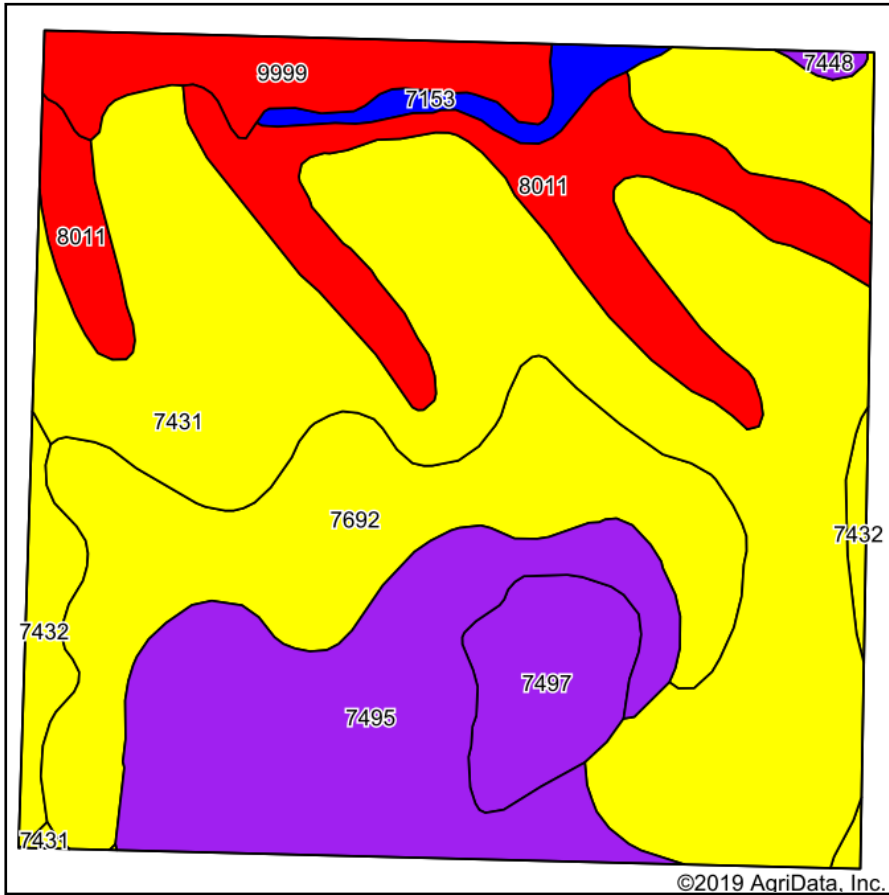


Soils Map



State: **Nebraska**
 County: **Richardson**
 Location: **28-3N-13E**
 Township: **Franklin**
 Acres: **160**
 Date: **12/19/2019**

Maps Provided By:

 CUSTOMIZED ONLINE MAPPING
 © AgriData, Inc. 2019 www.AgriDataInc.com



Soils data provided by USDA and NRCS.

Area Symbol: NE147, Soil Area Version: 18

| Code | Soil Description | Acres | Percent of field | SRPG Legend | Non-Irr Class *c | Irr Class *c | SRPG | Alfalfa hay | Caucasian bluestem | Common bermudagrass | Orchardgrass red clover | Tall fescue | Warm season grasses | *n NCCPI Overall | *n NCCPI Corn | *n NCCPI Small Grains | *n S |
|------|--|-------|------------------|-------------|------------------|--------------|------|-------------|--------------------|---------------------|-------------------------|-------------|---------------------|------------------|---------------|-----------------------|------|
| 7431 | Morrill soils, 6 to 11 percent slopes, eroded | 65.91 | 41.2% | | IIle | IVe | 68 | | | | | | | 53 | 53 | 41 | |
| 7692 | Wymore silty clay loam, 3 to 11 percent slopes, eroded | 26.47 | 16.5% | | IIle | IIle | 70 | | | | | | | 51 | 51 | 46 | |
| 7495 | Pawnee and Mayberry clay loams, 3 to 11 percent slopes, eroded | 26.26 | 16.4% | | IIle | IVe | 60 | | | | | | | 42 | 38 | 37 | |
| 8011 | Ida soils, 30 to 60 percent slopes | 18.85 | 11.8% | | VIIe | | 4 | 1 | 1 | | 1 | 1 | 1 | 17 | 17 | 13 | |
| 9999 | Water | 8.08 | 5.1% | | | | 0 | | | | | | | | | 0 | 0 |
| 7497 | Pawnee and Malmo clay loams, 3 to 11 percent slopes, eroded | 7.14 | 4.5% | | IVe | | 52 | | | | | | | 43 | 43 | 36 | |
| 7432 | Morrill soils, 6 to 11 percent slopes, severely eroded | 4.42 | 2.8% | | IVe | IVe | 68 | | | | | | | 40 | 40 | 26 | |



| | | | | | | | | | | | | | | | | |
|-------------------------|--|------|------|--|-----|--|-------------|------------|------------|------------|------------|------------|------------|----------------|----------------|----------------|
| 7153 | Kennebec silt loam, rarely flooded | 2.48 | 1.6% | | Iw | | 83 | | | | | | | 94 | 94 | 68 |
| 7448 | Morrill soils, 11 to 17 percent slopes | 0.39 | 0.2% | | Vle | | 60 | | | | | | | 62 | 62 | 52 |
| Weighted Average | | | | | | | 55.5 | 0.1 | 0.1 | 0.1 | 0.1 | 0.1 | 0.1 | *n 43.8 | *n 43.1 | *n 35.6 |

*n: The aggregation method is "Weighted Average using major components"

*c: Using Capabilities Class Dominant Condition Aggregation Method

Soils data provided by USDA and NRCS.